

# Air valve ( 5/2 5/3 way )

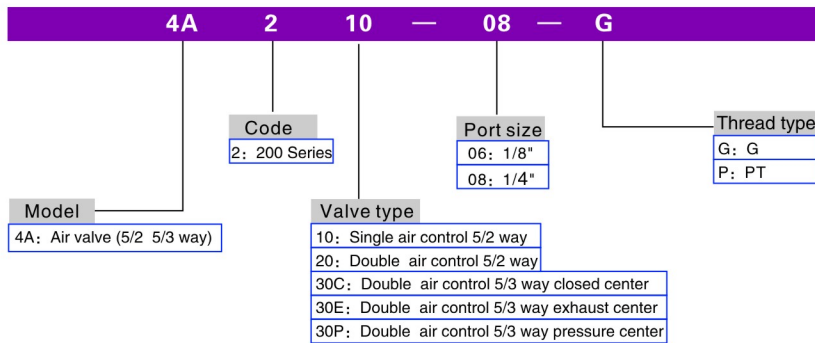
## 4A200 Series

### Specification

Model	4A210-06 4A220-06	4A230C-06 4A230E-06 4A230P-06	4A210-08 4A220-08	4A230C-08 4A230E-08 4A230P-08
Fluid	Air (to be filtered by 40um filter element)			
Acting	Exterior control			
Port size ①	In=Out=Exhaust=1/8"		In=Out =1/4"	Exhaust=1/8"
Orifice size	14.0mm <sup>2</sup> (Cv=0.78)	12.0mm <sup>2</sup> (Cv=0.67)	16.0mm <sup>2</sup> (Cv=0.89)	12.0mm <sup>2</sup> (Cv=0.67)
Valve type	5 port 2 position	5 port 3 position	5 port 2 position	5 port 3 position
Operating pressure	0.15-0.8MPa(21~114Psi)			
Proof pressure	1.5MPa(215Psi)			
Temperature °C	-20~70			
Material of body	Aluminum alloy			
Lubrication ②	Not required			
Max. frequency ③	5 cycle/sec	3 cycle/sec	5 cycle/sec	3 cycle/sec
Weight	4A210-06:185g 4A220-06:285g	365g	4A210-08:185g 4A220-08:285g	365g

- ① G thread and PT thread are available;  
 ② It can not stop in the midway of lubricating. Lubricants like ISO VG32 or equivalent are recommended;  
 ③ The maximum actuation frequency is in the no-load state.

### Ordering code

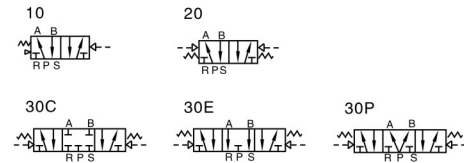


Please refer to PI-35 for manifold specification and the order way.



4A200

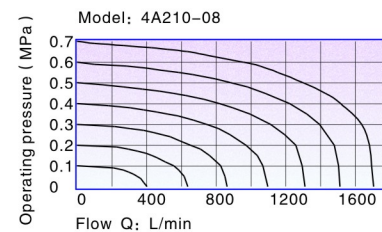
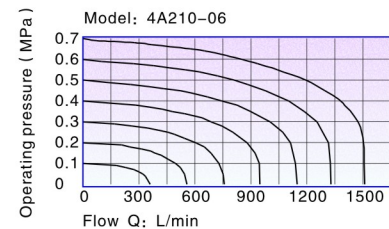
### Symbol



### Product feature

1. Structure in sliding column mode: good tightness and sensitive reaction.
2. There are three medium functions of three-position air valves for your choice;
3. Two-position air control valve with two heads has memory function;
4. Internal hole adopts special processing technology which has little attrition friction, low start pressure and long service life;
5. No need to add oil for lubrication;
6. Integrate with the manifold to save installation space.

### Flow chart



# Air valve ( 5/2 5/3 way )

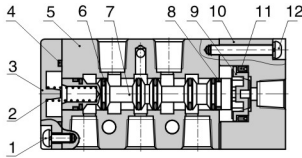
## 4A200 Series



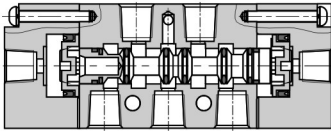
4A200

### Inner structure

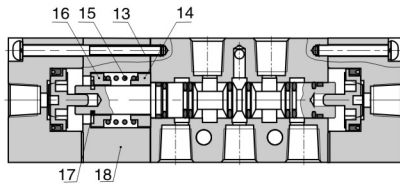
#### 4A210



#### 4A220



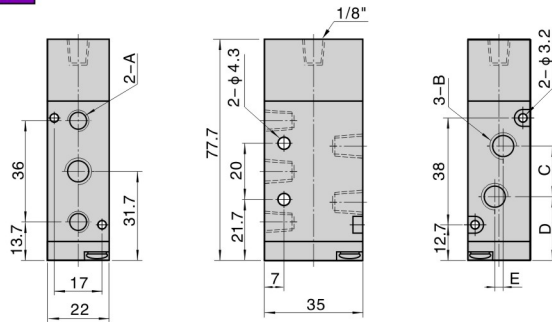
#### 4A230C



NO.	Item	NO.	Item
1	Bottom cover screw	10	Pilot body
2	Spool spring	11	Piston O-ring
3	Bottom cover	12	Pilot screw
4	Bottom cover gasket	13	Pilot screw
5	Body	14	Return seat
6	Spool O-ring	15	Return spring
7	Spool	16	Return seat
8	Wear ring	17	E clip
9	Piston	18	Side cover

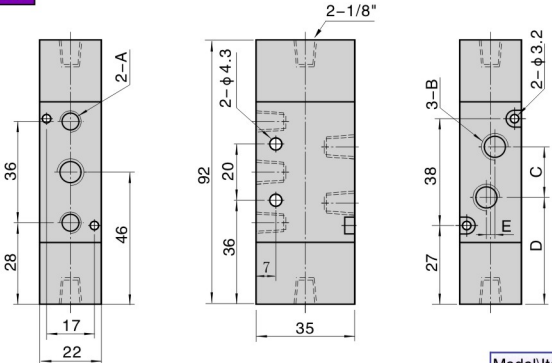
### Dimensions

#### 4A210



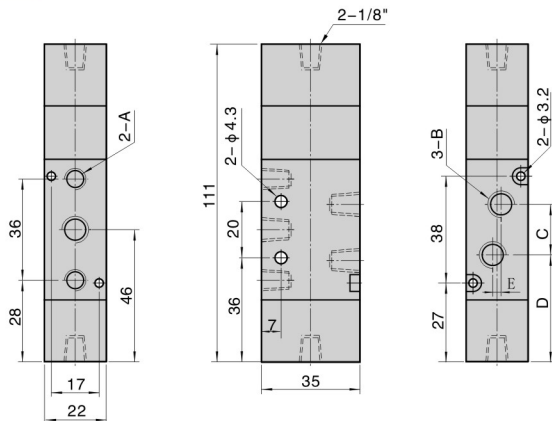
Model/Item	A	B	C	D	E
4A210-06	1/8"	1/8"	18	22.7	0
4A210-08	1/8"	1/4"	21	21.2	3

#### 4A220



Model/Item	A	B	C	D	E
4A220-06	1/8"	1/8"	18	37	0
4A220-08	1/8"	1/4"	21	35.5	3

#### 4A230



Model/Item	A	B	C	D	E
4A230-06	1/8"	1/8"	18	37	0
4A230-08	1/8"	1/4"	21	35.5	3

