

# Air valve ( 5/2 5/3 way )

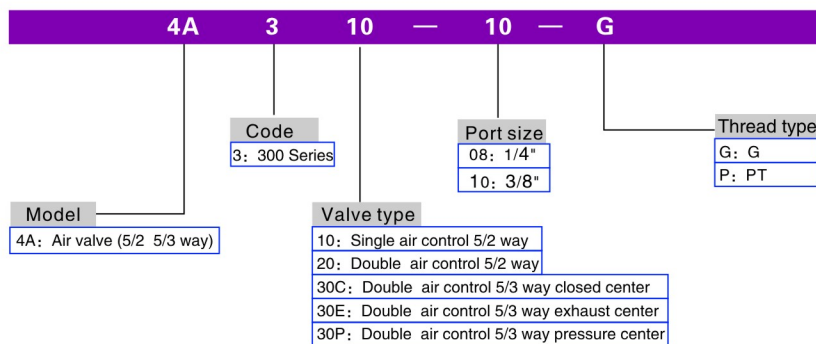
## 4A300 Series

### Specification

Model	4A310-08 4A320-08	4A330C-08 4A330E-08 4A330P-08	4A310-10 4A320-10	4A330C-10 4A330E-10 4A330P-10
Fluid	Air( to be filtered by 40um filter element)			
Acting	Exterior control			
Port size ①	In=Out=Exhaust=1/4"		In=Out =3/8"	Exhaust=1/4"
Orifice size	25.0mm <sup>2</sup> (Cv=1.40)	18.0mm <sup>2</sup> (Cv=1.00)	30.0mm <sup>2</sup> (Cv=1.68)	18.0mm <sup>2</sup> (Cv=1.00)
Valve type	5 port 2 position	5 port 3 position	5 port 2 position	5 port 3 position
Operating pressure	0.15-0.8MPa(21~114Psi)			
Proof pressure	1.5MPa(215Psi)			
Temperature ℃	-20-70			
Material of body	Aluminum alloy			
Lubrication	Not required			
Max. frequency ②	4 cycle/sec	3 cycle/sec	4 cycle/sec	3 cycle/sec
Weight	4A310-08:275g 4A320-08:365g	505g	4A310-10:275g 4A320-10:365g	505g

- ① G thread and PT thread are available;  
② The maximum actuation frequency of no-load state.

### Ordering code

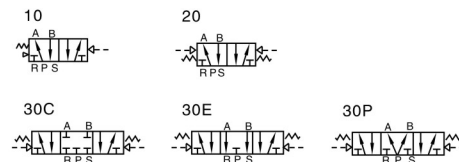


Please refer to PI-35 for manifold specification and the order way.



4A300

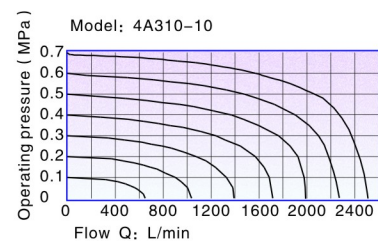
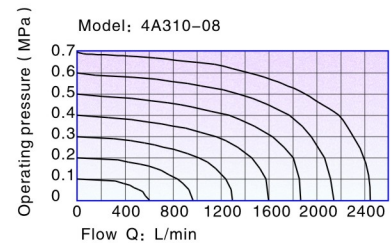
### Symbol



### Product feature

- 1、Structure in sliding column mode: good tightness and sensitive reaction;
- 2、There are three medium functions of three-position air valves for your choice;
- 3、Two-position air control valve with two heads has memory function;
- 4、Internal hole adopts special processing technology which has little attrition friction, low start pressure and long service life;
- 5、No need to add oil for lubrication;
- 6、Integrate with the manifold to save installation space.

### Flow chart

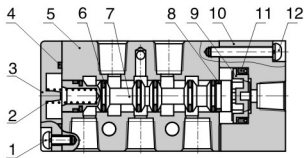


# Air valve ( 5/2 5/3 way )

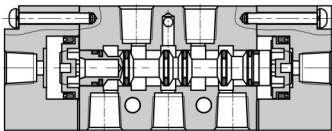
4A300 Series

## Inner structure

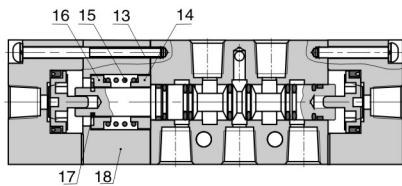
4A310



4A320



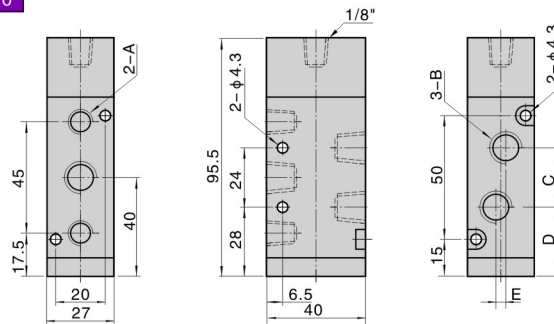
4A330C



NO.	Item	NO.	Item
1	Bottom cover screw	10	Pilot body
2	Spool spring	11	Piston O-ring
3	Bottom cover	12	Pilot screw
4	Bottom cover gasket	13	Pilot screw
5	Body	14	Return seat
6	Spool O-ring	15	Return spring
7	Spool	16	Return seat
8	Wear ring	17	E clip
9	Piston	18	Side cover

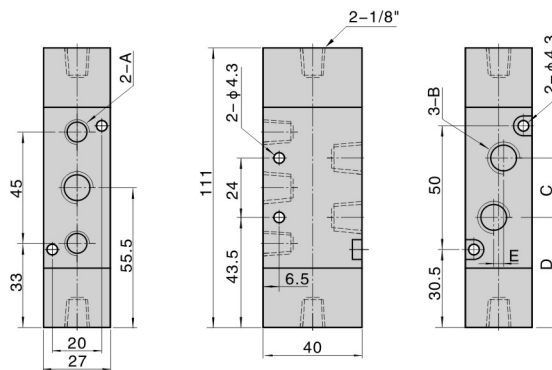
## Dimensions

4A310



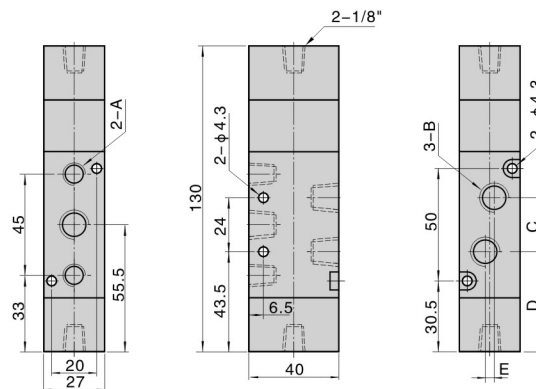
Model/Item	A	B	C	D	E
4A310-08	1/4"	1/4"	22	29	0
4A310-10	1/4"	3/8"	24	28	4

4A320



Model/Item	A	B	C	D	E
4A320-08	1/4"	1/4"	22	44.5	0
4A320-10	1/4"	3/8"	24	43.5	4

4A330



Model/Item	A	B	C	D	E
4A330-08	1/4"	1/4"	22	44.5	0
4A330-10	1/4"	3/8"	24	43.5	4

